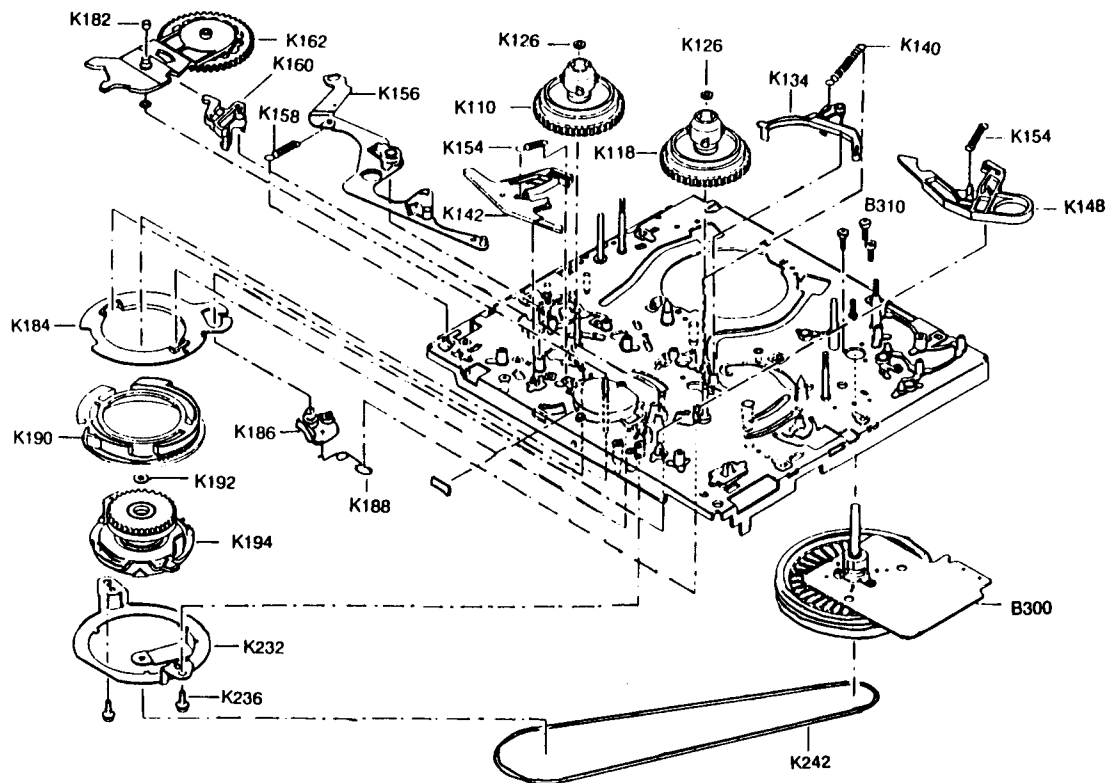
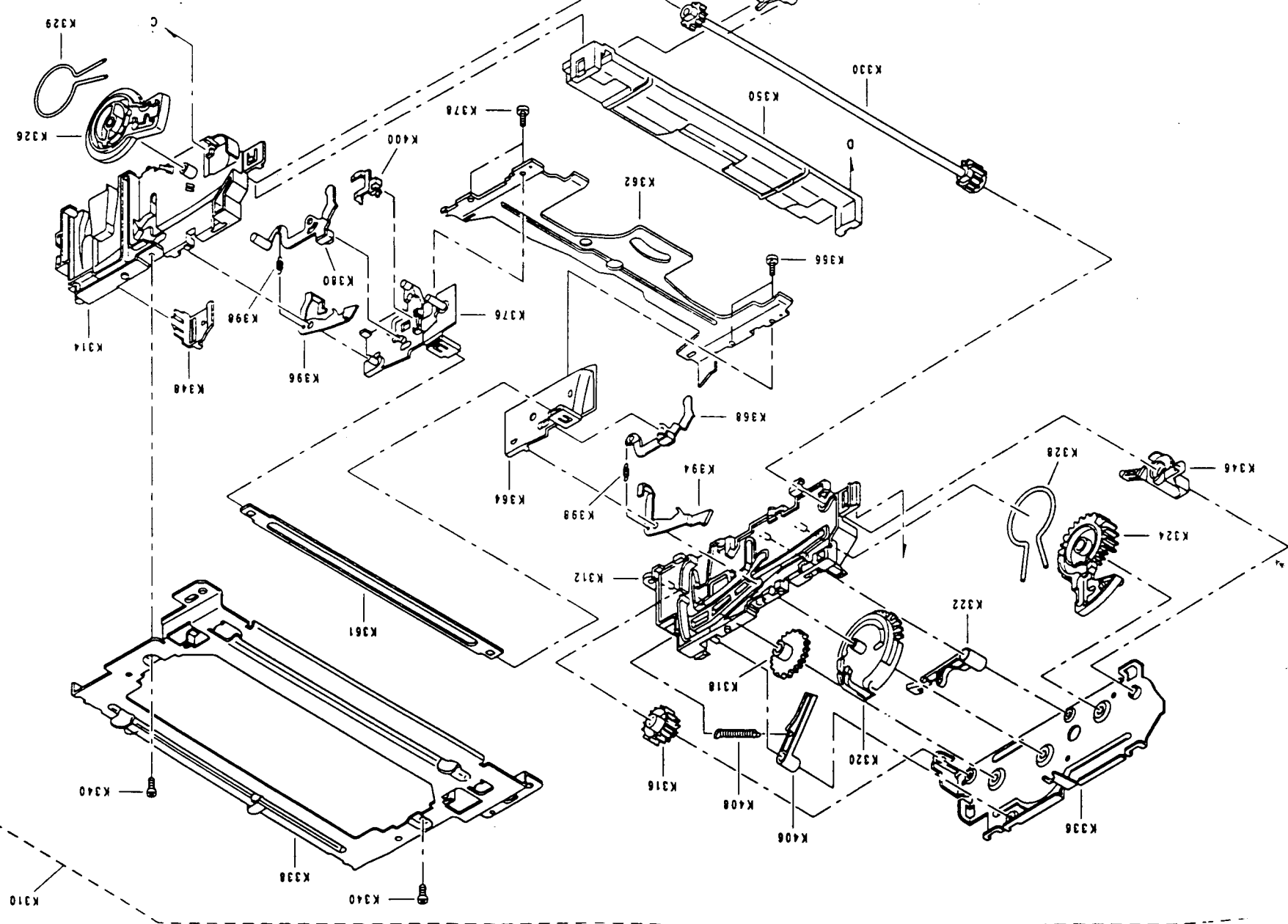
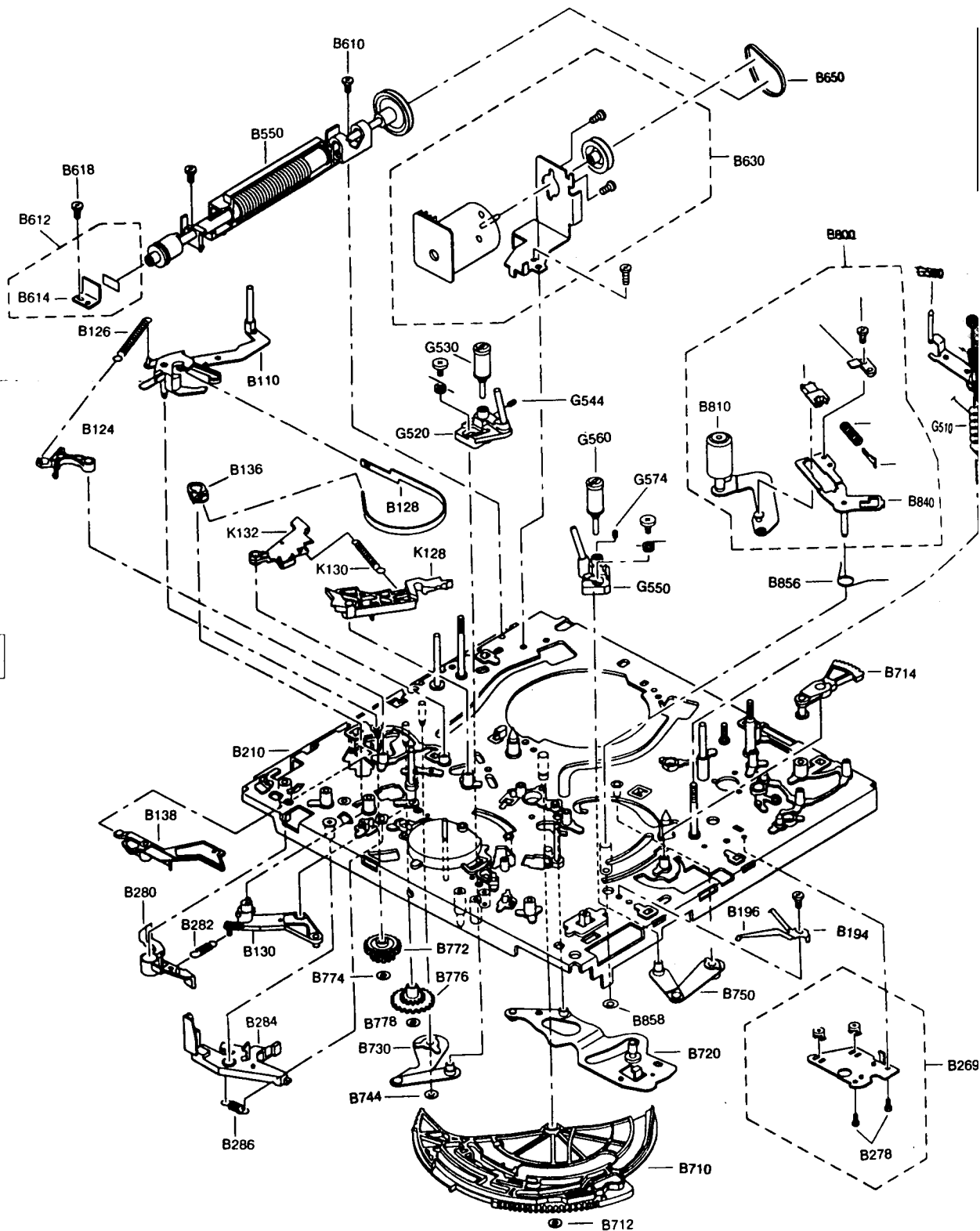


TRANSPORT MECHANISM EXPLODED VIEW (2 of 3)



SOME PARTS WITH ITEM  
FLOODED VIEW MAY NOT  
SEPARATELY, IT MAY BE  
AS PART OF AN ASSEMBLY





## REPLACEMENT PARTS (Continued)

(See Product Safety Note on first page of this parts list)

SYMBOL NO.	STOCK NO.	DRAWING NO.	DESCRIPTION
SK15	211666		SWITCH
SK16	211666		SWITCH
T721	211667		TRANSFORMER BIAS OSC
T801	212410		TRANSFORMER
T802	211668		TRANSFORMER
TX20	206122		TRANSISTOR LED XMT
TX21	215977		SWITCH
TY27	212411		TRANSISTOR LED POWER
V201	212412		TRANSISTOR SWITCH
W601	211669		BRACKET
W602	211670		CONNECTOR & CABLE
W603	215978		CONNECTOR & CABLE
W701	211671		CABLE
W801	211672		CONNECTOR & CABLE
W802	211673		CONNECTOR & CABLE
W805	209885		CONNECTOR & CABLE
w993	216079		CABLE
WI03	211676		CABLE & CONNECTOR
W01	211677		CABLE
WX01	211678		CABLE
WK16	212414		CABLE
x401	209893		CRYSTAL 3.58 MHZ
x501	209894		RESONATOR 10 MHZ
XE01	209725		RESONATOR 31.8 MHZ
Z681	206063		IC CIRCUIT PROTECT
Z111	212415		TRANSISTOR MDE SENSE
Z112	212415		(ABS)
Z113	212416		TRANSISTOR MDE SENSE
Z114	212416		(REL)
ZX01	206131		TRANSISTOR SUPPLY REEL
ZZ01	216080		SENSOR
			TRANSISTOR TAKEUP REEL
			SENSOR
			MODULE IR RECEIVER
			FILTER

## MECHANICAL ASSEMBLY

NOTE: SOME PARTS WITH ITEM NUMBERS ON EXPLODED VIEWS MAY NOT BE AVAILABLE SEPARATELY, OR MAY BE AVAILABLE ONLY AS PART OF AN ASSEMBLY.

1	212468	. CIRCUIT, KEYBOARD
1A	212245	SCREW 3MMD X 6MM
2	212245	SCREW 3MMD X 6MM
2A	215967	. CIRCUIT, FRONT AV
3	215968	. CIRCUIT, KEYBOARD
		DISPLAY
3A	212245	SCREW 3MMD X 6MM
4	212240	. CABLE, POWER
5	212239	CLAMP

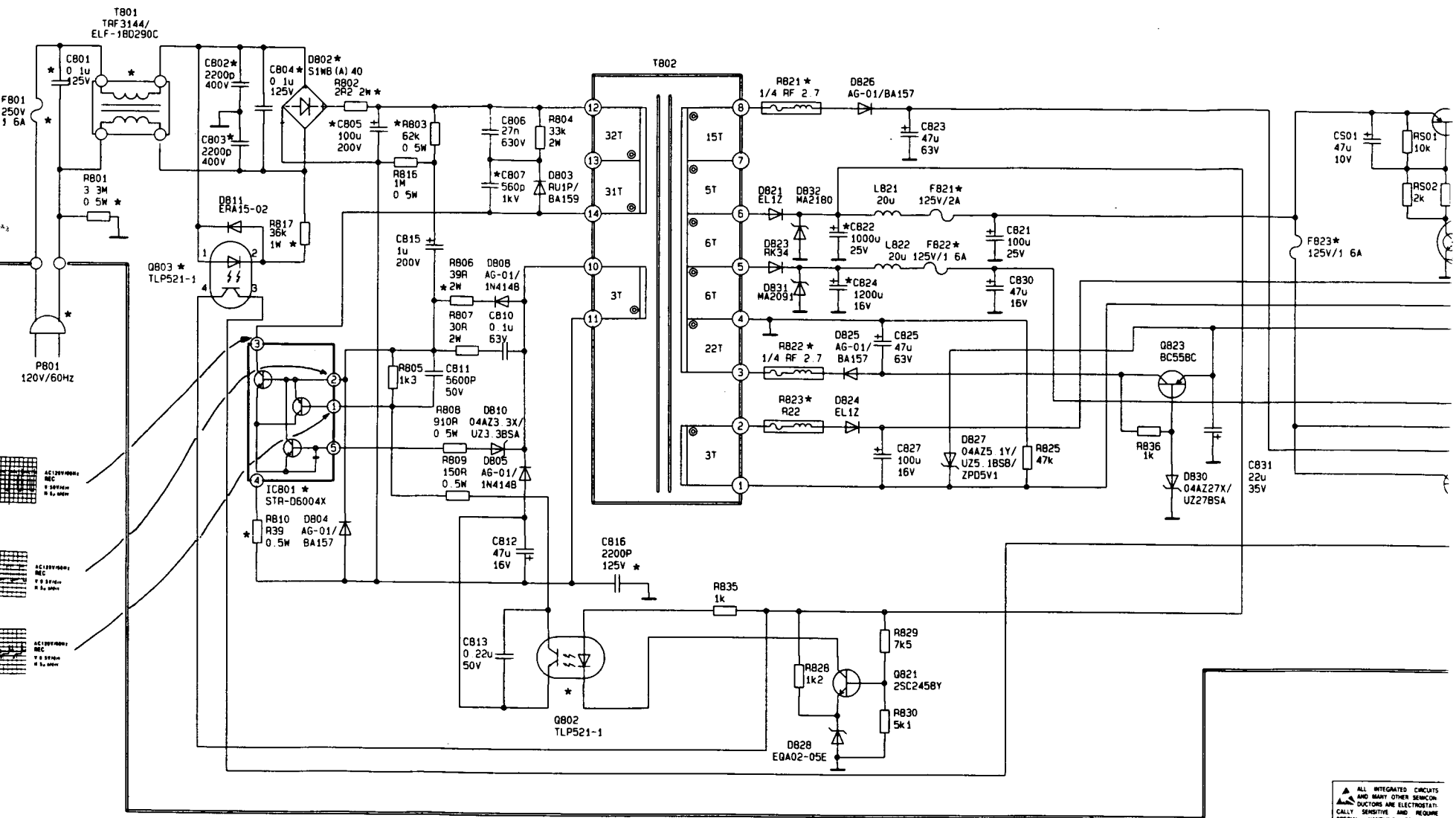
SYMBOL NO.	STOCK NO.	DRAWING NO.	DESCRIPTION
5A	212241		SCREW 3MMD X 10MM
6	212241		SCREW 3MMD X 10MM
7			NON-STOCK PART
8			NON-STOCK PART
8A	211502		SCREW 3MMD X 6MM
9	212242		. CIRCUIT, SERVO/MECHA
9A	207610		SCREW 3MMD X 8MM
10			SEE #W801
11	209729		SCREW 4MMD X 12MM
12			SEE #B630
13	215969		‡ CIRCUIT, PREAMP
14	212251		SCREW 2.6MMD X 5MM
15	215970		. CIRCUIT, AUDIO
15A	207610		SCREW 3MMD X 8MM
16	215971		. CIRCUIT, MAIN
16A	209735		SCREW 3MMD X 6MM
18	216013		. CIRCUIT, VIDEO
19	212247		SCREW 3MMD X 6MM
20	209735		SCREW 3MMD X 10MM
21	212245		SCREW 3MMD X 6MM
22	212241		SCREW 3MMD X 10MM
23	216104		. CIRCUIT, POWER SUPPLY
24			SEE #H005
A110	215966		PANEL, FRONT ASSEMBLY
A120	211503		COVER, BOTTOM
A121	212241		SCREW 3MMD X 10MM
A130	209734		SCREW 3MMD X 10MM
A140	212249		COVER, TOP
A142	209735		SCREW 3MMD X 10MM
B110	212252		ARM TENSION
8124	212253		LEVER, TENSION
8126	212254		SPRING
8128	212255		BRAKE
8130	212256		LEVER
8136	212257		HOLDER
8138	212258		SLIDER, DRIVE
8150	212259		BRUSH
8160	212260		SCREW 3MMD X 3MM
8194	212261		PLATE
B196	212260		SCREW 3MMD X 3MM
8210			NON-STOCK PART
8262	212262		LEVER
8264	212263		SCREW 2MMD X 3MM
8268	212264		SCREW 2.6MMD X 6MM
8269	212265		LEVER, PLATE
8278	212266		SCREW 2.6MMD X 4MM
8280	215987		LEVER
8282	212267		SPRING
8284	212268		LEVER
8286	212269		SPRING
B300	211506		‡ MOTOR, CAPSTAN ASSEMBLY
8310	211507		SCREW 2.6MMD X 6MM
B550	212270		SHAFT
8610	212264		SCREW 2.6MMD X 6MM
8612	212271		STOPPER
8614			NON-STOCK PART
8618	212272		SCREW 2.6MMD X 3MM
8630	212273		‡ MOTOR, DRIVE ASSEMBLY
8642	216077		SCREW 3MMD X 4MM
8650	212274		BELT
B710	212275		CAM
8712	212276		RING
8714	212277		DRIVE
8720	212278		DRIVE, OSC ASSEMBLY
8730	212279		LINK, (S) LOAD

# REPLACEMENT PARTS (Continued)

(See Product Safety Note on first page of this parts list)

SYMBOL NO.	STOCK NO.	DRAWING NO.	DESCRIPTION
B744	216003		MIRROR
B750	212280		LINK, (T) LOAD
B772	212281		GEAR
B774	212282		RING
B776	216004		GEAR
B778	212282		RING
B800	215989		BLOCK, ASSEMBLY
B810			NON-STOCK PART
B840			NON-STOCK PART
B856	212283		SPRING
B858	207679		RETAINER
B880	212284		CAP
B890	211508		SCREW 2MM X 4MM
G001			NON-STOCK PART
G001A	215979		SCREW 3MM X 8MM
G002	212296		SCREW
G003	212297		HEAD
G101	216028		‡ HEAD, UPPER CYLINDER
G101A	216007		SCREW 2.6MM X 8MM
G102	216029		‡ CYLINDER, LOWER ASSEMBLY
G103	216009		CAP, GROUND
G103S	216010		BRUSH, KIT
G130A	216011		SCREW 2.6MM X 8MM
G410	216005		LEVER
G418	207557		‡ HEAD, FULL ERASE
G420	207611		SCREW 2.6MM X 6MM
G430	212298		SPRING
G432	212299		FLANGE
G434	212300		ROLLER
G436	212301		SLEEVE
G438	212302		NUT
G450	207618		COVER
G452	212303		CAP
G460			NON-STOCK PART
G462	212305		BASE
G468	212304		HEAD, AUDIO CONTROL ASSEMBLY
G472	207696		SHAFT
G474	207691		SPRING
G476	207685		RETAINER
G478	207652		SCREW 5MM X 8MM
G480	207667		SCREW
G484	212307		SPRING
G486	212302		NUT
G488	212308		NUT
G500	212309		GUIDE
G510	212310		SPRING
G512	212311		NUT
G520	212312		SLIDER, SWITCH
G530	212313		ROLLER, SWITCH
G544	207637		GEAR
G550	212314		SLIDER
G560	212315		ROLLER
G562	212316		ROLLER, SHAFT GUIDE
G574	207637		GEAR
H004	216031		‡ CIRCUIT, IF
H005	211564		‡ CIRCUIT, TUNER/ RF CONVERTER
K110	212319		REEL, SUPPLY
K118	212320		REEL, TAKEUP
K126	207641		RETAINER
K128	212321		LEVER
K130	212322		SPRING

SYMBOL NO.	STOCK NO.	DRAWING NO.	DESCRIPTION
K132	212323		LEVER
K134	212324		LEVER
K140	212325		SPRING
K142	212326		LEVER
K148	212327		LEVER
K154	212328		SPRING
K156	212329		LEVER
K158	212330		SPRING
K160	212331		LEVER
K162	212332		IDLER, ARM ASSEMBLY
K182	212333		CAP, IDLER ARM
K184	212334		RING
K186	212335		LEVER
K188	212336		SPRING
K190	212337		CAM
K192	212338		WASHER
K194	212339		CLUTCH, ASSEMBLY
K232	212340		HOLDER, CLUTCH ASSEMBLY
K236	212341		SCREW 2.6MM X 10MM
K242	211575		BELT
K310	212342		‡ HOLDER, CASSETTE ASSEMBLY
K312			NON-STOCK PART
K314			NON-STOCK PART
K316	212343		GEAR
K318	212344		GEAR
K320	212345		GEAR
K322	212346		LEVER
K324	212347		GEAR
K326	212348		GEAR
K328	212349		SPRING
K329	212350		SPRING
K330	212351		SHAFT
K336			NON-STOCK PART
K338	212352		BRACKET
K340	212353		SCREW 3MM X 6MM
K346	212354		LEVER
K348	212355		BRACKET
K350	212356		BRACKET
K361	212357		BRACKET
K362	212358		PLATE
K364	212359		BRACKET
K366	212360		SCREW 2.6MM X 8MM
K368	212361		LEVER
K376	212362		BRACKET
K378	212360		SCREW 2.6MM X 8MM
K380	212363		LEVER
K394	212364		LEVER
K396	212365		LEVER
K398	212366		SPRING
K400	212367		LEVER
K402	212368		LEVER
K404	212369		SPRING
K406	212370		LEVER
K408	212371		SPRING
K410	212296		SCREW
M002	216030		‡ MOTOR, DRUM (STATOR) ASSEMBLY
REMOTE TRANSMITTER			
			TRANSMITTER, COMPLETE SEE INCLUDED ACCESSORIES



(UNIT: V)

MODE	PART NO	Q821			Q822			Q501			Q502		
		C	B	E	C	B	E	C	B	E	C	B	E
OFF		11.7	5.6	4.9	14	0	0	14	13.3	14	0	4.6	0
EE		11.9	5.6	4.9	14	9.5	8.9	14	13.3	14	0	4.6	0
PLAY		11.9	5.6	4.9	14	9.5	8.9	6.1	14	14	14	0	0

(UNIT: V)

MODE	PART NO	P802						W802A	
		PIN 5	PIN 6	PIN 8	PIN 9	PIN 10		PIN 2	PIN 4
OFF		14	14	-16.6	-20.1	-24.6		7	40.4
EE		14	14	-17.8	-19.3	-24.9		6.9	44
PLAY		6.1	14	-17	-19.7	-24.1		6.8	44.4

ALL INTEGRATED CIRCUITS AND MANY OTHER SENSITIVE COMPONENTS ARE ELECTROSTATICALLY SENSITIVE AND REQUIRE SPECIAL HANDLING TECHNIQUES DESCRIBED UNDER ELECTROSTATICALLY SENSITIVE DEVICES IN THE SAFETY AND SERVICE PRECAUTIONS PUBLICATION.

CALLOUTS NEXT TO WIRING PLUGS INDICATE CONNECTIONS TO OTHER SCHEMATICS.

PRODUCT SAFETY NOTE: COMPONENTS WITH A (E) HAVE SPECIAL CHARACTERISTICS IMPORTANT TO SAFETY. BEFORE REPLACING ANY OF THESE COMPONENTS READ CAREFULLY.